

2019-2020 Catalogue

version 1.0



Gel Documentation System

 **major
science**
Innovative Life Sciences Tools

Gel Documentation System

Major Science offers a wide range of Gel Documentation System specifically designed to fit researchers' specifications and budgets. Gel Documentation System are offered for a variety of applications depending on the system and camera configurations. This product line also includes UV Transilluminators and UV / Blue light transilluminators for all your imaging needs. All products feature user-friendly operation, compact size and outstanding functions.

More blue light technology instruments are introduced to the category of blue light, [Page 50-57](#)

Gel Documentation System

■ Imaging System

39-45

SmartView Pro Imager
 SmartView Pro Imager, CCD / CMOS
 SmartView Simple Imager System
 Compact Digimage System / Digimage System

■ Transilluminator

46-49

SmartView Transilluminator
 UV Transilluminator



*All images are for reference only, actual products might differ from the images.
 *Please visit our website at www.majorsci.com for more product selection and detailed information.
 *Technical specification subject to change without notice.

2.0 MP CCD Camera

SmartView Pro Imager

UVCI-2300 / UVCI-2400

MS UVCI-2300/2400, the truly standalone Gel Imaging System, delivers incredible image and sharpness with the power of an exceptional close-up monochrome 2.0 mega-pixel CCD camera, and get you ready for beautifully discriminable DNA/Protein gel images in the spaciouly intuitive 10.4" interface with color touch-screen. Our innovative systems are expandable with white and blue light plates coupled with the versatility of camera filters, no matter it's an EtBr or EtBr-free operations, simply tab to view. Many post-imaging features like drawer-type platform and UV protection shield are added to your convenience for gel excision.



UVCI-2300 / UVCI-2400



Control Interface



System setup



Default setting

Features

- Standalone gel doc system with high-quality monochrome CCD
- Exchangeable emission Filters provide for instant visualization
- Intuitive 10.4" interface with color touch-screen
- Zoom-able lens for proper picture size
- Movable platform for gel excision with UV-protection shield
- Automatic UV shut off mechanism (UVCI-2300 only)
- Optional trans white light and blue light plates (UVCI-2300 only)
- Exclusively designed for EtBr-free operation gel doc system (UVCI-2400 only)
- Optional trans white light plates for UVCI-2400



UV light protection warning

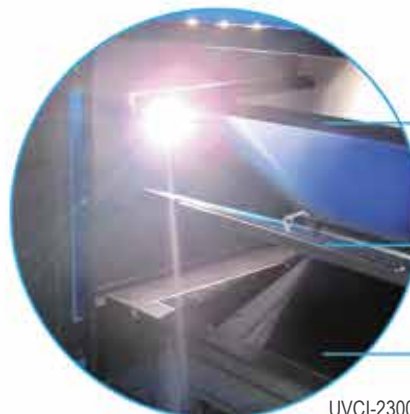


Batch file management



Blue light plate (UVCI-2300)

White light plate



White Light Plate (Flip type)

Blue Light Plate (Flip type)

UV Transilluminator (Drawer type)

UVCI-2300



UVCI-2300-EB



UVCI-2300-SG



UVCI-2300-F4



UVCI-2313



UVCI-2314



UVCI-2300-BL



UVCI-2300-WL



MJC-8-STYLUS-00000



CI-CL55+1

Specifications

Model	SmartView Pro 2300	SmartView Pro 2400
Cat. No.	UVCI-2300	UVCI-2400
Camera	1/1.8" interline UXGA monochrome progressive 2.0MP CCD	
Pixels Size	4.4µm x 4.4µm	
Lens (Camera)	F1.2, 12.5 – 75mm (with one +1 close-up lens), 6X zoom lens, manual	
Camera Video Output	12bit	
Filter (Camera) *Ordered Separately	Optical EtBr Filter / Optical SYBR Green Filter / Orange Amber Filter	Orange Amber Filter
Image Storage	Built-in 14GB Memory (3000 tiff images storage) and USB flash	
Cabinet	Pull out, sliding transilluminator	
Field Of View (WxL)	Maximum field of view 10.2"x8.3" (260x210mm)	
Dimension (WxLxH)	Approx. 16.1"x16.7"x35.8" (410x425x910mm)	
Weight	Approx. 62.8lbs. (28.5kg)	Approx. 56lbs. (25.4kg)
Display	10.4" color touch screen, 800x600	
Viewing Window	Built-in UV viewing window	Built-in blue light viewing window
Window Filter	Amber Filter embedded in viewing window (580nm)	
Light Source	Built-in drawer type UV Transilluminator 312(302)nm build-in LED white light	Built-in drawer type blue light transilluminator 470nm
Optional Accessory	White Light Plate (power built-in)	
	Blue light plate (power built-in) 470nm	N/A
Saved Image	Max. 16bit	
Grayscale	12bit, 0-4095 gray levels	
Safety	CE	
Rated Voltage	100-240V~, 50/60Hz	

*MS 1D Analysis Software (MBE-IMG-SW) is included in UVCI-2300/UVCI-2400 for image analysis only.

Ordering Information

Cat. No.	Product Description
UVCI-2300	SmartView Pro 2300 Imager System, UV light version
UVCI-2400	SmartView Pro 2400 Imager System, Blue light version

* All filters have to be ordered separately.

Accessories

Cat. No.	Product Description
UVCI-2300-EB	SmartView EtBr Filter, 610nm (for UV)
UVCI-2300-SG	SmartView SYBR Green Filter, 520nm (for UV)
UVCI-2300-F4	SmartView Amber Filter, 580nm (for blue light)
UVCI-2313	SmartView Pro UV Protection Shield, for 2300 series
UVCI-2314	SmartView Pro Lens Filter Stand, can hold up to 4 lens filters, for 2300 & 2400 series
UVCI-2300-BL	Blue Light Plate for SmartView Pro 2300 series
UVCI-2300-WL	White Light Plate 210x260mm for SmartView Pro 2300 & 2400 series
MJC-8-STYLUS-00000	Stylus Pen
CI-CL55+1	55mm Close up lens +1 for CCD Image System
MBE-IMG-SW	MS 1D Analysis Software
DI-CLIQS	DI-CLIQS Gel Analysis Software



Viewing via window



Viewing via screen



Viewing window
(Amber filter, 580nm)

SmartView Pro Imager, CCD SmartView Pro Imager, CMOS

FC CE

UVCI-2100 series UVCI-1100 series

The SmartView Pro 2100 is simply the upgraded version of UVCI-1100. The SmartView Pro 2100 offers all same great features except the 2.0 megapixel CCD camera to provides image with sharper sensitivity, and less exposure time. All the accessories are compatible for the 1100 and R100 version for easy use. All important features such as pre-focused lens, safety UV door and 1D analysis software are all included as standard. Enjoy the most compact CCD imaging system for all of your laboratory work.

The SmartView Pro 1100 provides the basic feature and standard operation.

2.0 MP CCD Camera



UVCI-2100

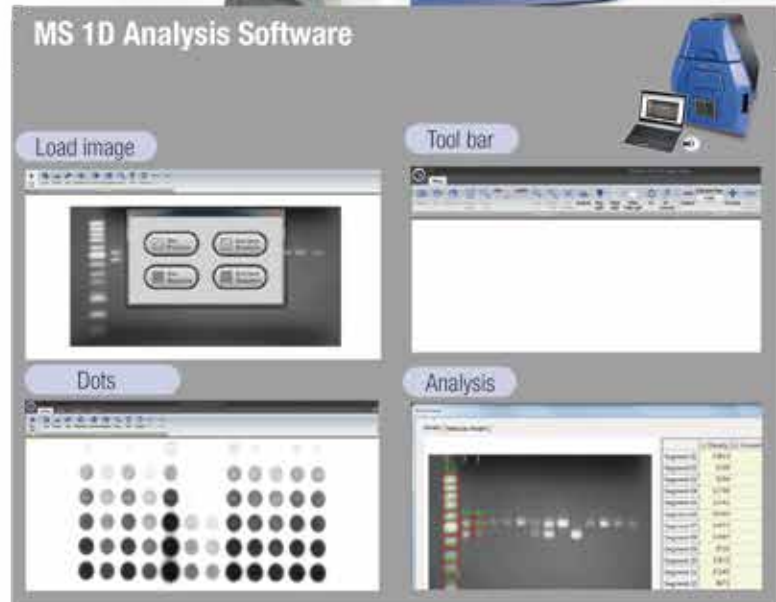


PC is not included

UVCI-1100



5.0 MP Monochrome Camera



White Light Plate for protein analysis

Features

- High resolution CCD camera (UVCI-2100)
- High resolution 5.0 megapixel monochrome camera (UVCI-1100)
- PC integration with real time image
- Capture/Analysis software included
- Pull out UV Transilluminator for easy gel cutting
- Easy installation, ready to use right out of the box
- Pre-focused lens allow one touch image capture
- Variety of optional accessories available
- UV safety cut-off switch when door is open
- CE and FCC certification



Easily gel cutting design with UV



Viewing window (Amber filter, 560nm)

Specifications

Model	SmartView Pro 2100	SmartView Pro 1100
Cat. No.	UVCI-2100	UVCI-1100
UV Light	Built-in drawer type UV Transilluminator 312(302)nm	
Camera	1/1.8" interline UXGA monochrome progressive 2.0MP CCD	1/2.5" 5M Pixel Monochrome sensor
Pixels Size	4.4µm x 4.4µm	2.2µm x 2.2µm
Lens (Camera)	6mm, F1.2	
Camera Video Output	12-bit	
Filter (Camera) *Ordered separately	Optical EtBr Filter / Optical SYBR Green Filter / Yellow Amber Filter / Orange Amber Filter	
Image Storage	PC	
Software Support	Window 10 / 8 / 7 (64bit & 32bit) / XP / Vista	
Cabinet	Pull out, sliding transilluminator	
Field Of View (WxL)	Approx. 10.2"x8.3" (260x210mm)	
Dimension (WxLxH)	Approx. 16.1"x15.9"x22.4" (410x405x570mm)	
Weight	Approx. 54lbs. (24.5kg)	
Display	LED indicator light	
Viewing Window	Built-in UV viewing window	
Window Filter	Built-in Viewing Window Amber Filter 560nm	
Light	White light (standard)	
Optional Accessory	White Light Plate (power built-in)	
	Blue light (power built-in) 470nm	
Safety	CE, FCC	
PC Connection	USB port	
1 D Analysis Software	Cat. No. MBE-IMG-SW included	
Saved Image	BMP/JPEG/PNG/TIFF, 8 bit; PNG/TIFF, 16 bit	
Rated Voltage	100-240V~, 50/60Hz, 2A	

* iPad and PC not included.

* MS 1D Analysis Software (MBE-IMG-SW) is included in UVCI-2100/UVCI-1100 for image capture and analysis .

Ordering Information

Cat. No.	Product Description
UVCI-2100	SmartView Pro 2100 Imager System, standard version
UVCI-2101	SmartView Pro 2100 Imager System, standard version, high UV performance
UVCI-1100	SmartView Pro 1100 Imager System, standard version
UVCI-1101	SmartView Pro 1100 Imager System, standard version, high UV performance

* All filters have to be ordered separately.

Accessories

Cat. No.	Product Description
UVCI-1000-WL	White Light Plate for SmartView Pro Imager System, 1100 & 2100 series
UVCI-1000-BL	Blue Light Module for SmartView Pro Imager System, 1100 & 2100 series
UVCI-1100-EB	SmartView EtBr Filter, 610nm (for UV)
UVCI-1100-SG	SmartView SYBR Green Filter, 520nm (for UV)
UVCI-1100-F3	SmartView Amber Filter 560nm
UVCI-1100-F4	SmartView Amber Filter 580nm
UVCI-1000-F1	Viewing window Amber filter, 560nm for SmartView Pro Imager System, 1100 & 2100 series
UVCI-1003	SmartView Pro UV Protection Shield, for 1100 & 2100 series
UVCI-1004	SmartView Pro Lens Filter Stand, can hold up to 4 lens filters, for 1100 & 2100 series
MBE-G-Y1	Amber Filter Viewing Glasses, 560 nm (optional)
MBE-IMG-SW	MS 1D Analysis Software
DI-CLIQS	DI-CLIQS Gel Analysis Software



UVCI-1000-WL



UVCI-1000-BL



UVCI-1100-EB



UVCI-1100-SG



UVCI-1100-F3



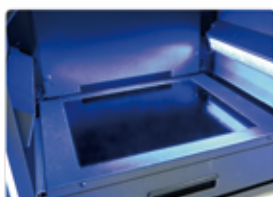
UVCI-1100-F4



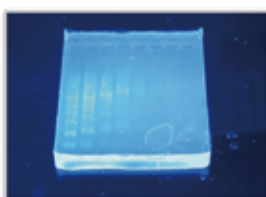
UVCI-1003



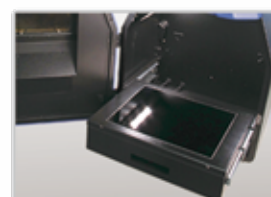
MBE-G-Y1



Epi-blue light for optional light source



Optional blue light device



Sliding transilluminator

SmartView Simple Imager System

MUV-IMG-CA

Major Science offers the SmartView Simple Imager System for your UV or blue light Transilluminator. This unit is designed extremely light in weight and compact in size.

For any lab with limited budget and lab space, the SmartView Simple Imager System is definitely the choice of selection. It is compatible with most transilluminators on the market. (for any maximum viewing size less than 260x210mm)

The digital camera model gives an impressive resolution of 24.2 megapixels, and provides you a PC-free operation environment with high mobility.

Features

- Extremely light weight and compact in size
- Effective Pixels Approx. 24.2 megapixels (Total Pixels Approx. 25.8 megapixels)
- Can be operated PC free
- Optical filters available upon ordering (EtBr, SYBR, and 580nm Amber filter)

Specifications

Camera spec.	
Camera Type	24.2MP digital camera, Wi-Fi function
Effective Pixels	Approx. 24.2 megapixels (Total Pixels Approx. 25.8 megapixels)
Sensor	22.3 x 14.9mm CMOS sensor
Max. Aperture	f/3.5-6.3 (IS STM Lens)
Shutter Speed	1/4000 - 30sec. (available range varies by shooting mode)
Storage Media	SD memory card, Wi-Fi to PC, Smartphone or Tablet
Computer Interface	USB 2.0 Hi-speed, AV, HDMI, WiFi connection
Video Out	Full HD / HD / NTSC / PAL
Image Resolution	6000x4000
Lens	35mm film equivalent focal length, approx. 1.6 times the lens focal length
File Format	Designed rule for Camera File system 2.0
Data Type	JPEG, RAW(14-bit, Canon original), RAW+JPEG simultaneous recording possible
Filter (For Camera, Optional)	"EtBr filter / SYBR Green filter / Amber Filter *ordered separately"
Darkroom	
Dimension (WxLxH)	Approx. 9.3"x12.5"x16.5" (236x317x420mm)
Material	Acrylonitrile Butadiene Styrene (ABS)
Weight	Approx. 3.1lbs. (1.4Kg)
Camera Adapter Material	Aluminum

* iPad and PC not included.

Ordering Information

Cat. No.	Description
MUV-IMG-CA	SmartView Simple 310 Imager system, with 18.0 MP digital camera
MUV-IMG-CA-01	SmartView 310 holder kit, includes hood and camera adapter only

* All filters have to be ordered separately.

Bundle Package

Cat. No.	Description
MUV21-CP-02	Complete package of MUV21-312 Transilluminator and SmartView Simple 310 Imager System (MUV-IMG-CA)
MUV26-CP-02	Complete package of MUV26-312 Transilluminator and SmartView Simple 310 Imager System (MUV-IMG-CA)
MUVB-111-CP-02	Complete package of SmartView 111 Transilluminator and SmartView Simple 310 Imager System (MUV-IMG-CA)
MUVB-114-CP-02	Complete package of SmartView 114 Transilluminator and SmartView Simple 310 Imager System (MUV-IMG-CA)



Accessories

Cat. No.	Product Description
DI-CLIQS	DI-CLIQS Gel Analysis Software
Filter (for camera) *ordered separately	
DI-EB49	EtBr filter, 49mm
DI-SG49	SYBR Green filter, 49mm
DI-AM49	Amber filter, 49mm

Compact Digimage System Digimage System

UVDI series DI series

For UVDI series

The Compact Digimage System is a complete and compact gel documentation system with a digital control panel. The system uses a digital camera for image capture. The system is equipped with a built-in UV Transilluminator and a large 8" TFT colorful screen for gel observation. Its side access design provides a safe and convenient way for the user to recover agarose gel bands. For a low budget and limited space, the Compact Digimage System can be operated without a computer. A variety of images can be captured including: agarose and other fluorescent gels, colorimetric gels, autoradiography film, and blotting membranes. A safety switch is equipped to turn off the UV Transilluminator automatically when the front door is opened. Files can be saved in a variety of formats, including RAW format, ready to be transferred to a computer for storage and analysis.

For DI series

The Digimage System is a simple, compact gel documentation system with a rear digital control panel. It contains a digital camera with a superb resolution of 24.2 megapixels. The image is viewed from a large 8" TFT colorful screen with monitor purpose only, for a lab with limited space and low budget requirements, the Digimage System is definitely your top choice since it can be operated without computer. A variety of images can be captured including: agarose and other fluorescent gels, colorimetric gels, auto radiography film, and blotting membranes. A safety switch is equipped to turn off the UV Transilluminator automatically when the front door is opened. Files can be saved in a variety of formats, including RAW format, for transfer to a computer for storage and analysis.



Viewing window

Convenient access

Digital control panel

UVDI-CB series

UVDI series is offered as a complete system for the user to perform image capture, including:

- 1 x Compact Digimage System chamber
- 1 x Digital camera
- 1 x DC coupler
- 1 x 8" color TFT screen
- 1 x Memory card
- 1 x Memory card reader
- 1 x Built-in UV transilluminator



Wi-Fi function
PC is not included

Features

- Effective Pixels Approx. 24.2 megapixels (Total Pixels Approx. 25.8 megapixels)
- High resolution 8" TFT screen
- Digital control panel
- Compact chamber and lightweight
- Can be operated PC free
- Inner white light LED at two sides
- Safety door switch
- Optional gel analysis software package available
- Universal rated voltage: 100-240V~
- Built-in UV Transilluminator (UVDI)



High resolution 8" TFT screen



DI-01

MBE-200A

DI-01 is offered as a complete system for the user to perform image capture, including:

- | | |
|--------------------------|-------------------------|
| 1 x Digimage System hood | 1 x Digital camera |
| 1 x DC coupler | 1 x 8" color TFT screen |
| 1 x Memory card | 1 x Memory card reader |

Specifications

UV Transilluminator (For UVDI)		Camera Spec.	
Wavelength	254 / 312 (302) / 365nm	Camera Type	24.2MP digital camera, Wi-Fi function
Filter Size	Approx. 8.3"x8.3" (210x210mm)	Effective Pixels	Approx. 24.2 megapixels (Total Pixels Approx. 25.8 megapixels)
Light Source	6 tubes, 8 watt/tube	Sensor	22.3 x 14.9mm CMOS sensor
Filter	Long life filter	Max. Aperture	f/3.5-6.3 (IS STM Lens)
Intensity Switch	High (100%)/ Low (70%) Intensity switch	Shutter Speed	1/4000 - 30sec. (available range varies by shooting mode)
UVDI Darkroom		Storage Media	SD memory card, Wi-Fi to PC, Smartphone or Tablet
Multi-power Source	For camera, inner white LED, TFT monitor	Computer Interface	USB 2.0 Hi-speed, AV, HDMI, WiFi connection
Inner White Light	2 white LED, 3 watt/LED	Video Out	Full HD / HD / NTSC / PAL
Safety Device	Safety door switch	Image Resolution	6000x4000
Dimension (WxLxH)	Approx. 13.2"x21.3"x18.5" (335x540x470mm)	Lens	35mm film equivalent focal length, approx. 1.6 times the lens focal length
Material	Painted metal	File Format	Designed rule for Camera File system 2.0
Rated Voltage	110V - 220V	Data Type	JPEG, RAW(14-bit, Canon original), RAW+JPEG simultaneous recording possible
Weight	Approx. 44lb (20kg)	Filter (For Camera, Optional)	"EtBr filter / SYBR Green filter / Amber Filter *ordered separately"
Camera Adapter Material	Aluminum	Monitor	
DI-01 Spec.		Type	8" TFT LCD Monitor
Multi-Power Source	For camera, Inner light lamp, TFT monitor	Resolution	1024x600 pixels
Inner White Light	2 white LED, 3 watt/LED	Brightness	300cd / m ²
Safety Device	Safety door switch	Constant Ratio	700:1
Dimension (WxLxH)	11.4"x13.3"x15.9" (290x339x403mm)	Display Mode	NTSC / PAL auto switch
Material	Painted metal		
Rated Voltage	110/220V~, 50/60Hz, 1.6A		
Weight	Approx. 12.9lb (5.8kg)		
Camera Adapter	Aluminum		
DI Darkroom			
Dimension (WxLxH)	11.4"x13.3"x15.7" (290x339x398mm)		
Weight	Approx. 11.9lb (5.4kg)		

Ordering Information

Cat. No.	Description
UVDI-254	Compact Digimage System with 24.2 MP digital camera and built-in 254 nm UV Transilluminator
UVDI-312	Compact Digimage System with 24.2 MP digital camera and built-in 312 (302) nm UV Transilluminator
UVDI-365	Compact Digimage System with 24.2 MP digital camera and built-in 365 nm UV Transilluminator
UVDI-254/365	Compact Digimage System with 24.2 MP digital camera and built-in 254 & 365 nm UV Transilluminator
UVDI-254/312	Compact Digimage System with 24.2 MP digital camera and built-in 254 & 312(302) nm UV Transilluminator
UVDI-CB-254	Compact Digimage System with built-in 254 nm UV Transilluminator only, digital camera not included
UVDI-CB-312	Compact Digimage System with built-in 312 (302) nm UV Transilluminator, digital camera not included
UVDI-CB-365	Compact Digimage System with built-in 365 nm UV Transilluminator, digital camera not included
UVDI-CB-254/365	Compact Digimage System with built-in 254 & 365 nm UV Transilluminator, digital camera not included
UVDI-CB-254/312	Compact Digimage System with built-in 254 & 312 (302) nm UV Transilluminator, digital camera not included
DI-01	Digimage System with 18.0 megapixels digital camera
DI-HD	Digimage System without digital camera

Bundle Package

Cat. No.	Description
MUV21-CP-01	Complete package of MUV21-312 Transilluminator and Digimage System (DI-01)
MUV26-CP-01	Complete package of MUV26-312 Transilluminator and Digimage System (DI-01)
MUVB-111-CP-01	Complete package of SmartView 111 Transilluminator and Digimage System (DI-01)
MUVB-114-CP-01	Complete package of SmartView 114 Transilluminator and Digimage System (DI-01)

Accessories

Cat. No.	Description
DI-CLIQS	DI-CLIQS Gel Analysis Software
DI-DR-E12	DC coupler
DI-WLA3-110/220	White Light Table 297x400mm (110/220V)
DI-WLA4-110/220	White Light Table 210x297mm (110/220V)
DI-WLA6-110/220	White Light Table 105x150mm (110/220V)
Filter (for camera) *ordered separately	
DI-EB49	EtBr filter, 49mm
DI-SG49	SYBR Green filter, 49mm
DI-AM49	Amber filter, 49mm



MUV21-CP-01/
MUV26-CP-01



MUVB-111-CP-01
MUVB-114-CP-01



DI-DR-E12



DI-WLA3 (297x400mm)
DI-WLA4 (210x297mm)
DI-WLA6 (105x150mm)



DI-EB49



DI-SG49



DI-AM49

SmartView Transilluminator

MUVB series

SmartView Transilluminator is the next illuminator generation for your lab. Combining the blue and UV light, this equipment allows you to work either using blue or UV light with your samples.

The Epi-Blue light is proportionally emitted on samples to give excellent fluorescence for the examination of nucleic acid bands. As the single or dual wavelength UV light allows the induction of stronger signals.

Moreover, since blue light is within visible light spectrum, it easily provides just enough energy to induce the signals without endangering operator safety.

In addition, this two-in-one system provides you additional convenience for the work on any sample with UV light or using blue light simultaneously without moving your gel back and forth. The SmartView Transilluminator is the ultimate source for any of your lab practice.

Features

- Built-in blue light LED module with UV light
- Single or dual wavelength models are available for different application purposes
- Adjustable UV protection cover for better viewing angle efficiency
- Industry leading long life UV Filter
- Fast start up without flickering to instantaneous tube illumination
- High/Low intensity switch to minimize DNA degradation
- High efficiency reflector provides optimum use of UV light



Dye Application Guide

Cat. No.	UV Light	Blue Light
Major Blue	√	√√
SYBR® Green I (DNA)	√	√√
SYBR® Green II (RNA)	√	√√
SYBR® Gold	√	√√
Midori Green Direct	√	√√
Hydra Green™ Safe DNA Dye	√	√√
HD Green™ DNA Stain	√	√√
Novel Juice	√	√√
SafeView DNA Stain	√√	√
SYBR® Safe	√	√
Midori Green	√	√
Midori Green Advanced	√	√
Serva DNA Stain Clear G	√√	√
GelGreen™	√	√
GelRed™	√√	
Ethidium Bromide	√√	
HealthView™	√√	

√√ Excellent

√ Good



Built-in blue LED module provides flexibility in DNA stain selection



UV light applied



Blue light applied



Removable amber Filter

Specifications

Model	SmartView
Filter Size (WxL)	Approx. 8.3"x8.3" (210x210mm)
Intensity Switch	High (100%) / Low (70%) intensity switch for single wavelength model
Fast Response	High quality starter to light up the tubes instantaneously and cause no blinking
Blue Light Source	1W x 18 lamps
UV Resistance Plastic Cover (WxL)	Approx. 8.9"x10.2" (225x260mm) (Transparent)
Blue Light Resistance Plastic Cover (WxL)	Approx. 8.9"x10.2" (225x260mm) (Orange)
Dimension (WxLxH)	Approx. 13.4"x11.3"x6.9" (340x286x176mm)
Rated Voltage	100-230V~, 50/60Hz, 2A
Weight	Approx. 24.7lb (11.2kg)

Model	Cat. No.	Type	Wavelength	UV Light Source (1tube / 8W)
SmartView 111	MUVB-111	Single	312(302)nm	5 tubes
SmartView 112	MUVB-112	Single	254nm	5 tubes
SmartView 113	MUVB-113	Single	365nm	5 tubes
SmartView 114	MUVB-114	Single	312(302)nm (high performance)	5 tubes
SmartView 121	MUVB-121	Dual	254nm / 312(302)nm	4 tubes / 5 tubes
SmartView 122	MUVB-122	Dual	254nm / 365nm	5 tubes / 4 tubes
SmartView 123	MUVB-123	Dual	254nm / 312(302)nm (high performance)	4 tubes / 5 tubes

Ordering Information

Cat. No.	Product Description
MUVB-111	SmartView 111 Transilluminator with blue light and built-in UV, single wavelength 312(302)nm
MUVB-112	SmartView 112 Transilluminator with blue light and built-in UV, single wavelength 254 nm
MUVB-113	SmartView 113 Transilluminator with blue light and built-in UV, single wavelength 365 nm
MUVB-114	SmartView 114 Transilluminator with blue light and built-in UV, single wavelength 312(302) nm, high performance
MUVB-121	SmartView 121 Transilluminator with blue light and built-in UV, dual wavelength 254/312(302)nm
MUVB-122	SmartView 122 Transilluminator with blue light and built-in UV, dual wavelength 254/365nm
MUVB-123	SmartView 123 Transilluminator with blue light and built-in UV, dual wavelength 254/312 (302)nm, high performance

* For different single wavelength models, please consult with your regional manager.

* All filters have to be ordered separately.

Bundle Packages

Cat. No.	Product Description
MUVB-111-CP-01	Complete package of SmartView 111 Transilluminator and Digimage System (DI-01)
MUVB-111-CP-02	Complete package of SmartView 111 Transilluminator and SmartView Simple 310 Imager System (MUV-IMG-CA)
MUVB-114-CP-01	Complete package of SmartView 114 Transilluminator and Digimage System (DI-01)
MUVB-114-CP-02	Complete package of SmartView 114 Transilluminator and SmartView Simple 310 Imager System (MUV-IMG-CA)

Accessories

Cat. No.	Product Description
MBE-G-Y1	Amber Filter Viewing Glasses, 560 nm (optional)



MBE-G-Y1



MUVB-111-CP-01
MUVB-114-CP-01



MUVB-111-CP-02
MUVB-114-CP-02

UV Transilluminator

MUV series

The bench-top UV Transilluminator series offers the researcher uniform and intense sources of ultraviolet light (radiation) with a compact footprint. Their special design emits either one or dual intensity excitation UV wavelengths for back-illumination of transparent fluorescent materials. 254nm, 312 (302)nm, 365nm, 254 & 365nm, and 254 & 312 (302)nm modes are available for different applications. There are two choices of filter size viewing dimensions, 260x210mm and 210x210mm for different user requirements. The 365nm mode is offered for easy view of gels under long wave for extended periods of time avoiding photo nicking damage. The 254nm mode is used to irradiate samples. The 312 (302)nm mode is suggested for general gel operating. The single wavelength modes have a high intensity / low intensity switch equipped. All bench-top transilluminator modes are compact, lightweight and economical.

A high performance model, 312 (302)nm UV Transilluminator with a strong lighting and longer life time tubes, was introduced for demanding requirements.



FC CE



Adjustable UV protection cover



MUV-21 series



MUV-26 series

Features

- 254nm or 312 (302)nm or 365nm or 254/365nm or 254/312 (302)nm modes available
- 260x210mm or 210x210mm view dimension
- High intensity / low intensity switch for single wavelength model
- Adjustable UV protection cover for better viewing angle efficiency
- High performance models available
- Long life time filter

Specification

Model	MUV26 series	MUV21 series
Wavelength	254 / 312 (302) / 365nm	
Filter Size	Approx. 10.2"x8.3" (260x210mm)	Approx. 8.3"x8.3" (210x210mm)
Light Source	6 tubes, 8W/tube	
Filter	Long life filter	
	High efficiency reflector	
Intensity Switch	High (100%)/Low (70%) intensity switch for single wavelength mode	
Fast Start Up	High quality starter to simultaneously illuminate tubes when switched on and no blink	
UV Resistant Plastic Cover (WxL)	Approx. 13"x9.8" (330x250mm)	
Dimension (WxLxH)	Approx. 13.4"x11.6"x3.9" (340x295x100mm)	
Weight	Approx. 16.5lb (7.5kg)	
Rated Voltage	110V/220V~	

Ordering Information

Cat. No.	Product Description
MUV21-254	210x210mm Transilluminator for 254nm
MUV21-312	210x210mm Transilluminator for 312 (302)nm
MUV21-312H	210x210mm Transilluminator for 312 (302)nm, high performance
MUV21-365	210x210mm Transilluminator for 365nm
MUV21-254/365	210x210mm Transilluminator for 254 and 365nm
MUV21-254/312	210x210mm Transilluminator for 254 and 312 (302)nm
MUV21-254/312H	210x210mm Transilluminator for 254 and 312 (302)nm, high performance
MUV26-254	260x210mm Transilluminator for 254nm
MUV26-312	260x210mm Transilluminator for 312 (302)nm
MUV26-312H	260x210mm Transilluminator for 312 (302)nm, high performance
MUV26-365	260x210mm Transilluminator for 365nm
MUV26-254/365	260x210mm Transilluminator for 254 and 365nm
MUV26-254/312	260x210mm Transilluminator for 254 and 312 (302)nm
MUV26-254/312H	260x210mm Transilluminator for 254 and 312 (302)nm, high performance

Bundle Packages

Cat. No.	Product Description
MUV21-CP-01	Complete package of MUV21-312 Transilluminator and Digimage System (DI-01)
MUV21-CP-02	Complete package of MUV21-312 Transilluminator and SmartView simple 310 Imager System (MUV-IMG-CA)
MUV26-CP-01	Complete package of MUV26-312 Transilluminator and Digimage System (DI-01)
MUV26-CP-02	Complete package of MUV26-312 Transilluminator and SmartView simple 310 Imager System (MUV-IMG-CA)

Accessories

Cat. No.	Product Description
MUV-T254	8W 254nm UV lamp
MUV-T312	8W 312 (302)nm UV lamp
MUV-T365	8W 365nm UV lamp
MUV-F21-254/365	21x21cm Filter for built-in 254/365nm UV Transilluminator (with stainless steel frame)
MUV-F21-312	21x21cm Filter for built-in 312(302)nm UV Transilluminator (with stainless steel frame)



MUV21-CP-01
MUV26-CP-01



MUV21-CP-02
MUV26-CP-02

US Office

19959 Sea Gull Way
Saratoga, CA 95070
U.S.A.
T/ +1-408-366-9866
F/ +1-408-446-1107

Taiwan

Head Office:

No. 156, Sec. 1, Guoji Rd., Taoyuan Dist., Taoyuan City
33061, Taiwan
T/+886-3-3762802
F/+886-3-3761310

Factory:

No.19, Ln. 207, Huakang St. Bade Dist., Taoyuan City
33464 Taiwan
T/ +886-3-3623319
F/ +886-3-3623133

Shanghai Office

Room 612, International business exhibition center,
9300 Hunan Road, Pudong, Shanghai, China
National toll-free No.:400-823-9177
T/ +86-21-50795277
F/ +86-21-50795277

India Office

D. No. 12-13-99, Satguru Apts. Extn.
Street. No. 3, Lane No.1, Tarnaka
Secunderabad – 500 017. India
T/ +91-40-27001515
T/ +91-40-27001586



www.majorsci.com
info@majorsci.com

