

# TREKKER™






## True Single-Cell Spatial Omics



that's  
**GOOD**  
science!

Takara Bio Trekker™ is an innovative, instrument-free reagent kit designed to deliver true single-cell spatial transcriptomics. Transform standard single-cell data into high-resolution spatial maps by mapping individual nuclei back to their native tissue coordinates.

### Explore spatial biology at single-cell resolution

-  True single-cell spatial omics platform combining single nucleus RNA and Multi Omics Sequencing with spatial barcoding.
-  Precise spatial placement of individual cell nuclei within a tissue section.
-  Linking of full single cell gene expression profiles to spatial barcodes for accurate cell mapping.
-  Revelation of cell-to-cell interactions and tissue architecture at single cell resolution.
-  Integrates seamlessly with existing single-cell sequencing workflows.



FRESH

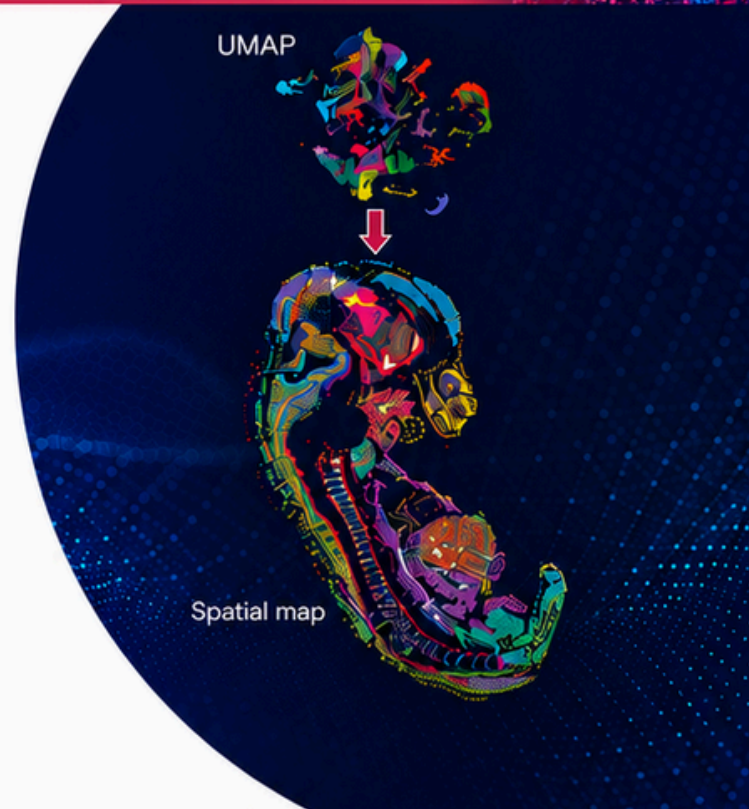


FROZEN



FFPE

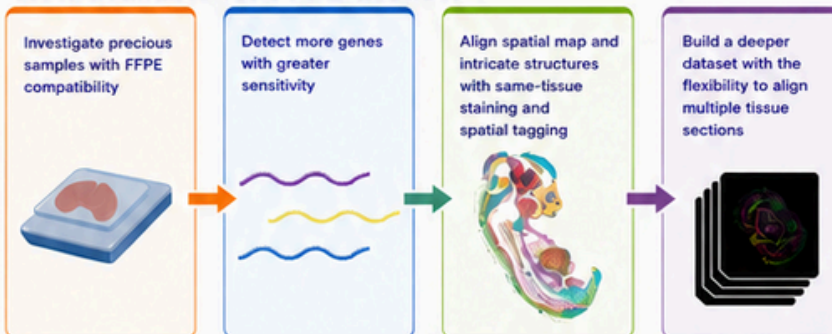
Suitable for  
fresh, frozen and  
**now FFPE**  
tissue samples.



**NEW!**

## TREKKER™ FX

Now available for FFPE tissues!



- ✓ Analyze precious archived samples with new formalin-fixed paraffin-embedded (FFPE) compatibility
- ✓ Preserve high sensitivity of sequencing data while incorporating spatial context
- ✓ Align complex structures and spatial maps using same-section H&E staining and spatial tagging
- ✓ Build deeper datasets with flexible multi-section alignment

### Trekker FX protocol videos

See how it works!

These Trekker FX protocol videos demonstrate key steps in the Trekker FX workflow to generate spatially tagged single nuclei from formalin-fixed paraffin-embedded (FFPE) tissue samples.

**Videos included:**

- Tissue section preparation
- Deparaffinization and decrosslinking
- Alignment fixture assembly
- UV cleavage
- Nuclei isolation
- Nuclei stabilization



Click on image to view the videos!



**LEARN MORE**  
Scan the QR code or  
[click here](#) for more information



High resolution  
spatial insights



Deeper biological  
understanding



Trusted performance,  
powered by Takara

PROUD DISTRIBUTOR OF

**LONZA**



**MACHEREY-NAGEL**  
Since 1911



**mirus bio**

**scientifix**

that's  
**GOOD**  
science!

1800 007 900

info@scientifix.com.au

scientifix.com.au